



Application of high throughput genotyping technologies for forest tree species identification and timber tracking, Madrid, Spain  
2017 September 13

jo.vanbrusselen@efi.int  
www.globaltimbertrackingnetwork.org

## Presentation outline



- GTTN in a nutshell
- Seeking a holistic approach to timber tracking
- GTTN Key objectives in phase II
- GTTN with and for the stakeholders
- Project tasks
  - *International standards*
  - *Service portfolio and lab-finder*
  - *[Meta-]database of reference data*
  - *Communication, networking and outreach*
- Expertise represented in the network
- Reasons to join GTTN

## GTTN in a nutshell



The objective of the Global Timber Tracking Network (GTTN) is to **promote the operationalization of innovative tools to verify trade claims of wood-based products.**

GTTN **assists the fight against illegal logging and related trade** around the globe, in support of the work of e.g. Monitoring Organisations, law enforcement agencies, or to assist operators' own due diligence systems.

3

## Seeking a holistic approach to timber tracking



- To address issues in a holistic way, by promoting an integrated use of innovative timber identification and localization technologies
  - ✓ DNA fingerprinting
  - ✓ Stable isotope analysis
  - ✓ Wood anatomy
  - ✓ Mass spectrometry
  - ✓ NIR

4

## GTTN Key objectives in phase II



- further develop and expand the network
- seek new partnerships
- facilitate active collaboration
- advocate for funding

5

## GTTN with and for the stakeholders



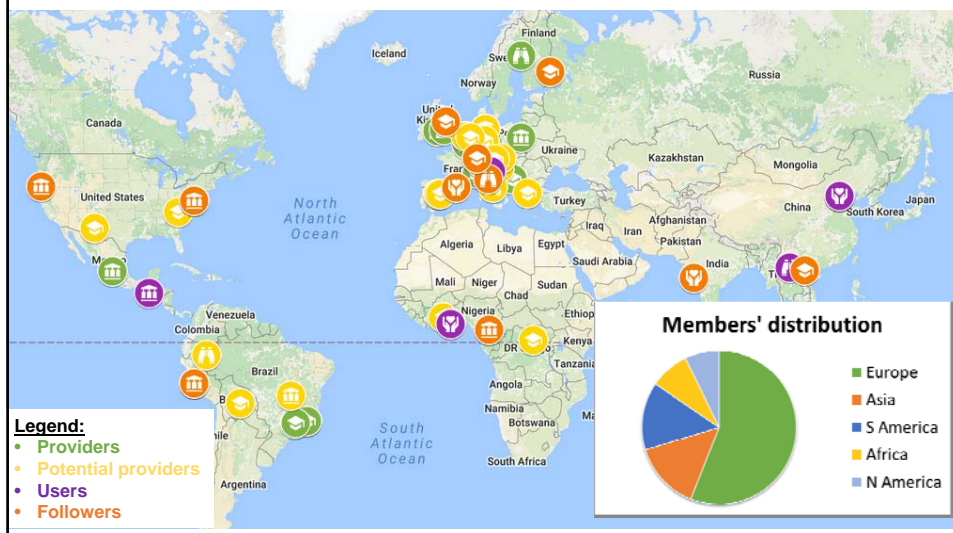
GTTN is intended as a **global platform** bringing together scientists, policy makers and other key players

GTTN is an **open alliance** that cooperates along a joint vision and the network activities are financed through an open multi-donor approach.

6

## Participate in a growing global network

Status of 20170901. The network remains open for registrations: for developers, providers and users of timber tracking, but also for other interested stakeholders.



## Global tasks



1. International standards
- 2.A. Service portfolio and lab-finder
- 2.B. [Meta-]database of reference data
3. Communication, networking and outreach

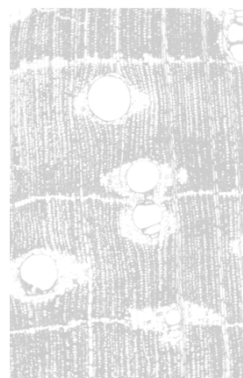
Cross-cutting  
themes for method-  
specific working  
groups

## International standards



Contribute to international standard setting on:

- Sampling
- Material storage
- Material exchange
- Methods for tests on tree species and geographic origin of timber
- Applicable regulation

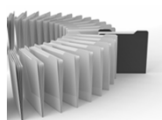


9

## Service portfolio and lab-finder



- Develop a laboratory and expert finder



- Develop guidance on best available method
- Depending on the product
- Depending on the claim of species and geographic origin
- Depending on the location of the customer
- For External users:
  - e.g. FB-I, monitoring organisations, enforcement and other public authorities

10

## Task - [Meta-]database of reference data



For internal users: participating laboratories

Furthering the Phase I database

- (geo-referenced) DNA
- stable isotope data
- (wood anatomy catalogues)
- (mass spectrometric data)
- Other?

### Data repository centre:

- One location or distributed databases
- Secure data entry and storage protocols
- Differentiated access levels

11

## Communication, networking, outreach



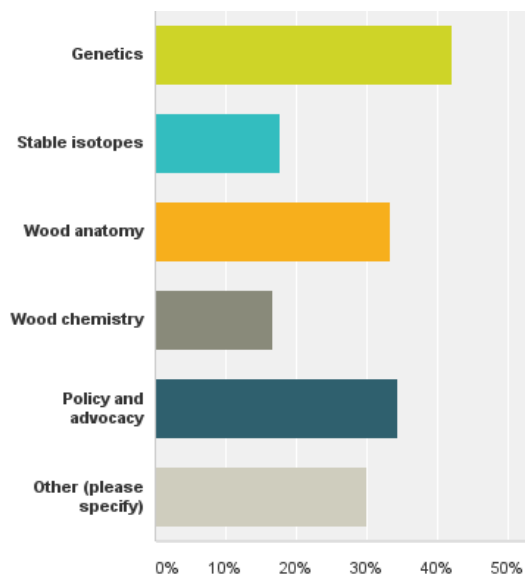
Effective communication truly relies on contributions from all partners in the network.

- GTTN on-line : [www.globaltimbertrackingnetwork.org](http://www.globaltimbertrackingnetwork.org)
- GTTN news, guidelines and other PR
- Organisation of regional workshops
- Promotion of GTTN Associated Event

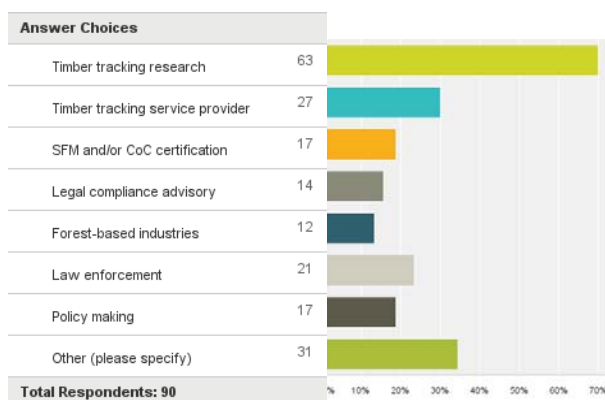


12

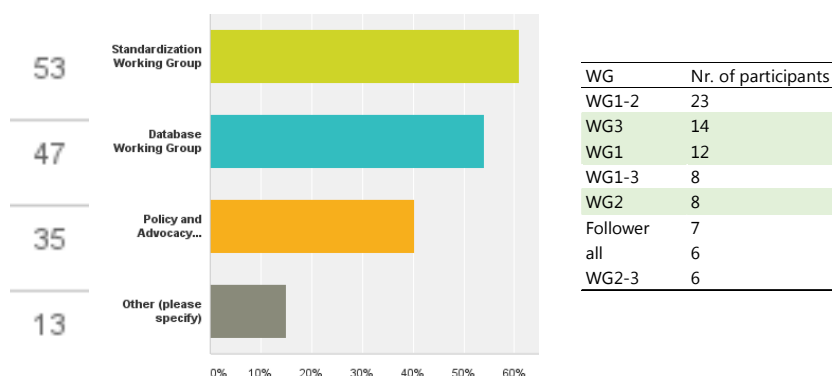
## Expertise represented in the network



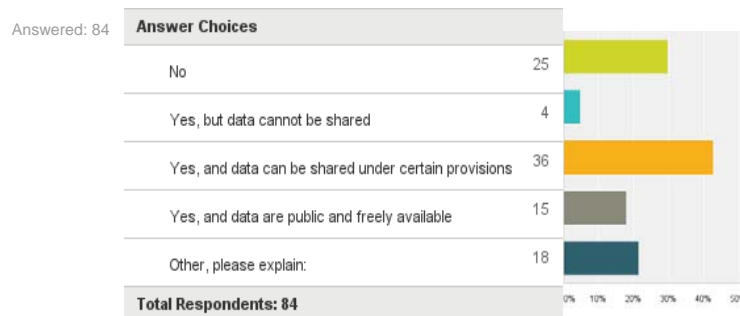
## Activity description (multiple choice)



"Indicate which **working group(s)** you want to contribute to?"



"Does your organization have **reference data** that are relevant for GTTN?"





## Being part of GTTN "What's in it for us?"



### Researchers and timber tracking service supply side:

- Make your work more visible via events, website, publications
- Broaden your network, possibility to synergize your efforts
- Standardization requires broad consensus
- Access to reference data helps diversify your service portfolio
- International engagement helps you raising your lab's profile
- Jointly create opportunities for new projects (funding!)

17

## Being part of GTTN "What's in it for us?"



### Practitioners, the demand side:

- Be at the forefront of novel methods design
- Take advantage of being an early adopter
- Increase certainty in due diligence systems | law enforcement
- Influence prioritisation of systems development, eg. species focus
- Tailor the development of GTTN services to meet your demand
- Your engagement will be visible through GTTN communications

18



Discover the GTTN network

Disclaimer Contact us

GTIN  
Global Timber  
Tracking Network

Organisation Providers Users Products News Events

JOIN

# WORKING GROUPS MEETINGS

19-20 Oct 2017 Washington D.C.

REGISTER

[www.globaltimbertrackingnetwork.org](http://www.globaltimbertrackingnetwork.org)

19



**GTIN**  
Global Timber  
Tracking Network

With support from



Federal Ministry  
of Food  
and Agriculture

by decision of the  
German Bundestag

The objective of the Global Timber Tracking Network (GTIN) is to promote the operationalization of innovative tools for wood identification and origin determination, to assist the fight against illegal logging and related trade around the globe.

GTIN is an open alliance that cooperates along a joint vision and the network activities are financed through an open multi-donor approach. GTIN phase 2 coordination (2017-2019) is financed by the German Federal Ministry of Food and Agriculture (BMEL).

[www.globaltimbertrackingnetwork.org](http://www.globaltimbertrackingnetwork.org)